



Shqipe  
Mehmeti

Storm 1, 2006, mixed media, 70x100 cm



Storm 2, 2007, mixed media, 70x100 cm



Life in a stone, 50x60 cm, mixed media, 2008



Leaves, 50x70 cm, mixed media, 2008



# A view through fragments

Fragmented perception seems to be the only absolute truth undeniable by human mind. Whole cultural, that is visual tradition is fragmented. Forever it existed, standing against the totality of very existence, forever inhabited by non-wholeness, by the incomplete products of the spirit, forever trying to reconstruct the idea of wholeness by means of non-wholeness.

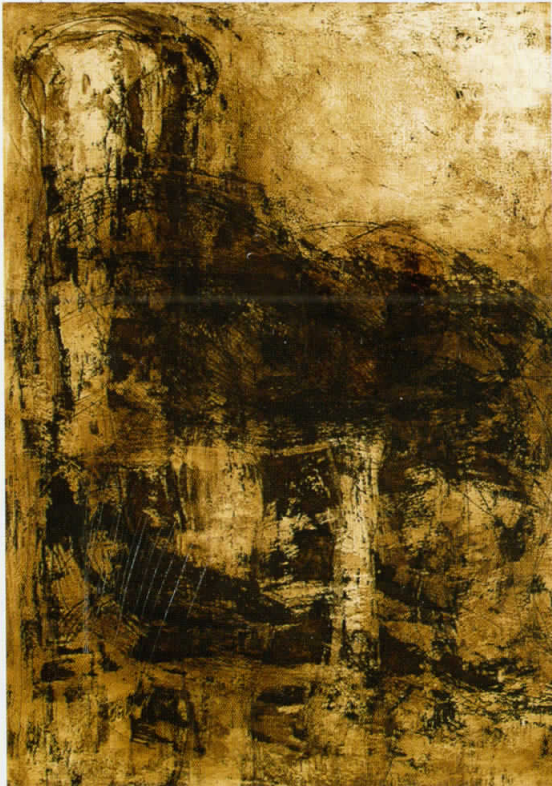
But the perception and the reception of objects in real world, however they seem segmented and temporary, however they might seem as manifestations of fulfillment with presence of absence, with nonidentity of identity, they are necessary for the survival of every creative spirit.

That same fragmentation that appears with young artist m-r Shqipe Mehmeti will be the crucial problem of her first independent exhibition. Her landscape-urban motives will appear globally through constant presence of incompleteness. The elimination of the whole will be profiled through binary structures. They will be recognized in persistent vibration between presence and absence, in fullness / emptiness, in stillness and liveliness. By means of one warm colorist game between sharp lines and soft surfaces, Mehmeti discontinues the monotony of compositional representation and suggests to the observer one inner distance of observance and acceptance.

Beginning from different motives and views of reception, and printing of the perception, through the principles of space-time cut, the author, through associative presentation, eliminates that primer, starting form of morphology of landscape or urban, interior or exterior "models". Chain of signs created through segments, emanates as one from the inside of a fragment, or as a fragment of the whole. With linear vivisection of space, she actualizes the phenomenon of order and consistent rhythmical changes that happen in nature.

Without paying attention to the techniques used to create the prints, that soft and warm lyrical discourse which emanates emotional tranquility and beauty of the surrounding, actually represents a mirror image of the pulsing given out from that subtle nature of the author.

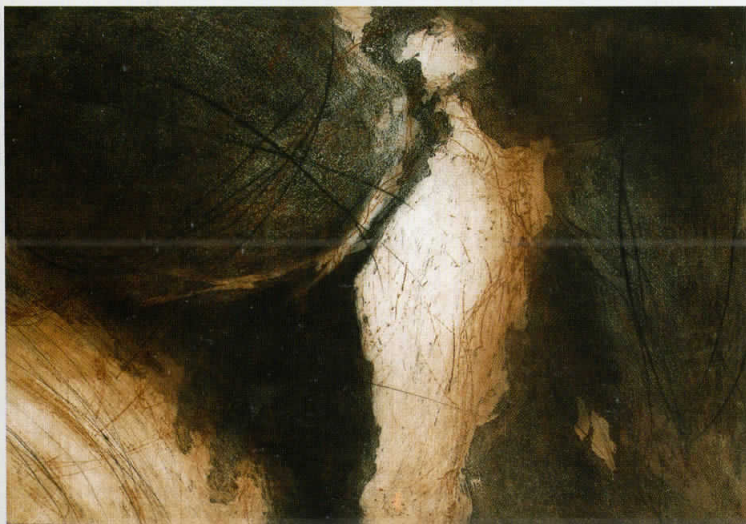
Ancient entrance, 100x70cm, mixed media, 2006



Land, 100x70 cm, mixed media, 2006



Untitled, 70x100 cm, mixed media, 2007



Fragments, 50x70 cm, mixed media, 2005





## Shqipe Mehmeti

Born: 1981, Kicevo, Macedonia  
Education: 2004-graduated from the Faculty of fine arts, Skopje, Macedonia  
2007-mastered graphic art from the Faculty of fine arts, Skopje, Macedonia  
Address: Stojan Sandeski 88, Kicevo, Macedonia  
E-mail & web site: shqipe\_81@yahoo.com ; www.shqipe.co.nr  
Tel: +38970968480

She has participated in more than 30 group exhibitions in Macedonia, Serbia, Montenegro, Bulgaria, Romania, Poland, Germany, Italy, Spain, Turkey, Egypt, Lithuania and France.

### Solo exhibitions:

2007 - Cultural Informative Center - Skopje, Macedonia  
2007 - Cultural center "Koco Racin" - Kicevo, Macedonia  
2007 - Cite International des Arts - Paris, France  
2008 - MC Gallery - New York, USA

### Awards:

2005 - 1st prize for graphics "Dragutin Avramovski Gute", small format, DLUM, Skopje, Macedonia  
2007 - National university library award, DLUM graphics exhibition, Skopje, Macedonia

Design:

Shqipe Mehmeti  
Gazmend Ajrullai

Text:  
Konca Pirkoska

Publisher:



549 West 52nd street, 8th floor,  
New York, Menhетен 10019  
tel: +1-212-581-1966  
e-mail: info@gallerymc.org

Print:

Print team  
Copies: 200

The project is financed by the Ministry of Culture of Republic of Macedonia



GALLERY MC

549 West 52nd street  
8th floor,  
New York, Menhetten 10019