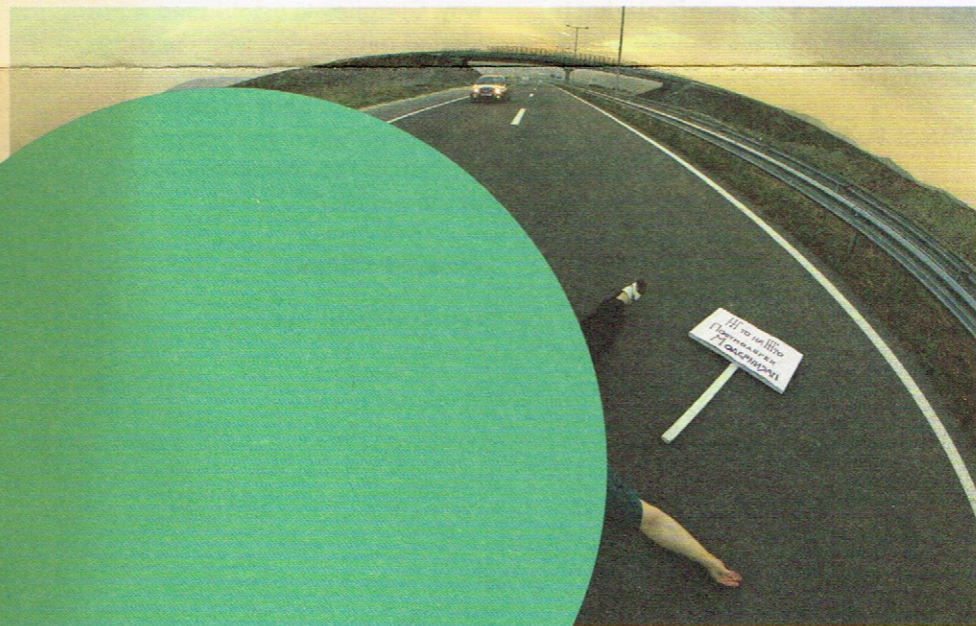
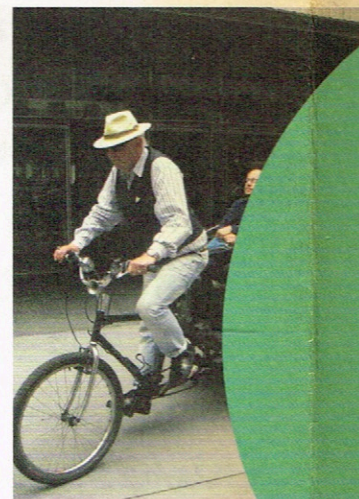
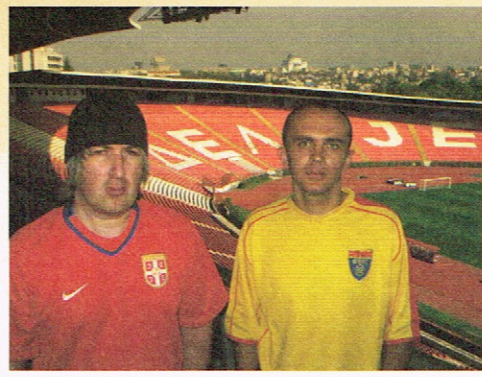




Muzej in galerija  
Mestna galerija  
Gorazdo Gjorgjiev  
Curatorial Workshop  
23. 9. - 17. 10. 2010



Muzej in galerija mesta Ljubljane  
Mestna galerija Ljubljana 2  
Gorazdo Gjorgjievski  
Curatorial Workshop  
23. 9. - 17. 10. 2010



Muzej in galerije mesta Ljubljane,  
Mestna galerija Ljubljana 2  
Gorančo Gjorgjievski  
Curatorial Workshop  
23. 9. - 17. 10. 2010

– Razstava makedonskega kustosa Goranča Gjorgjievskega, v referenčnem okviru fotografske reprezentacije binomskega razmerja kustos-umetnik in spremljajočih dokumentarnih zapisov umetniške produkcije avtorjev, s katerimi je kot kustos profesionalno sodeloval, sodi med programske novosti Mestne galerije in bi jo nemara lahko kontekstualno obravnavali kot integralni del oziroma specifično izpeljanko v letošnjem marcu organizirane razstave Komunikacijske mreže v isti galeriji, ki se je osredotočala na aktualna vprašanja poslanstva sodobnih umetnostnih institucij v mrežnih povezavah.

Projekt posredno omogoča reaktualizacijo in življenje Gjorgjievskih kuriranih razstav prek rekonstruiranih situacij t.i. »živih slik« z dvema akterjema – umetnikom in njegovim modelom. Gjorgjievski, sicer tudi skladatelj in performer, je z umetnikom – razstavljalcem in izbranim fotografom pripravil krajši performans in s kombiniranjem različnih scenskih vizualnih elementov, simbolov in konotativnih znakov v »koncentratni« obliki zaznamoval tematiko razstave ter jo prek fotografskega medija distribuiral v ponovno branje. Po prvem fotografiranju z Irwini ob instalaciji *Corpse of Art* (rekonstrukcija Maleviča v krsti po črno-beli fotografiji iz leta 1935) v prostorih Narodne galerije Makedonije – Multimedijskega centra Mala stanica v Skopju je sledila serija eksteriernih in interiernih posnetkov z umetniki iz makedonskega in širšega nekdanjega jugoslovanskega prostora. Na ta način je z njimi vzpostavil relacijsko razmerje – »P (priključitev), P (prisvajanje), S (soudeležba)«, kot je konceptualno zasnovano projekta imenitno definirali likovni teoretik Miško Šuvaković.\*

Mateja Podlesnik

Iz uvodnega besedila razstavnega kataloga

– This exhibition by the Macedonian curator Gorančo Gjorgjievski, which takes as its frame of reference photographic representations of the binominal curator-artist relationship and the pertinent documentary records of the participating artists' production, is an example of what is new in the Mestna galerija program; furthermore, it could be placed in the context of, or seen as an integral part or a specific derivative of, the exhibition Communication Networks, staged by Mestna galerija in March this year and focusing on the current issues inherent in the missions that contemporary art institutions pursue as they network.

Indirectly, by reconstructing situations with so-called *tableau vivants* with two actors, the artist and his/her model, this project revives or allows insight into exhibitions Gjorgjievski has curated. Also a composer and performer, Gjorgjievski has prepared short performances together with individual artists and a chosen photographer, summing up in "concentrated" form the themes of the exhibitions by combining various visual elements, symbols, and connotative signs of the performing-arts, and offering them up for rereading in the form of photographs. The first photo session was with the group Irwin and their installation *Corpse of Art* (a reconstruction of Malevich in a casket, after a 1935 black-and-white photograph) at the National Gallery of Macedonia – the Multimedia Center Mala Stanica in Skopje; it was followed by a series of exterior and interior shots with artists from Macedonia and other parts of former Yugoslavia. In this way, Gjorgjievski established a particular kind of relationship with the artists, a relationship the art theoretician Miško Šuvaković brilliantly described as "Plug-in, appropriation and complicity" in his analysis of the conceptual underpinning of the project.\*

Mateja Podlesnik

From the introductory text in the catalogue

Vljudno vabljeni na odprtje razstave v četrtek, 23. septembra ob 19. uri v Mestno galerijo Ljubljana 2, Cankarjevo nabrežje 11.

You are cordially invited to attend the opening of the exhibition on Thursday, September 23, at 7 pm at the Mestna galerija Ljubljana 2, Cankarjevo nabrežje 11.

ART I.N.S.T.I.T.U.T.  
Atanas Botev  
Siniša Cvetkovski  
Vlatko Čačorovski – Cole  
Zlatan Davidov  
Uroš Djurić  
Borjana Gjorgjievska  
Irwin  
Robert Jankulovski  
Gjorgje Jovanovik  
Ladislav King  
Miloš Kodžoman  
Irena Paskali  
Aleksandra Petruševska  
Zoran Poposki  
Bojan Radović  
Toše Ristov  
Bojan Simovski  
Aleksandar Stankoski  
Miroslav Stojanović  
Predrag Terzić  
Nina Todorović  
Igor Toševski  
Žaneta Vangeli  
Zero

\* Besedilo Miško Šuvakovića z naslovom PPS. Priključevanje - Prisvajanje - Soudeležba. O projektu Goranča Gjorgjievskega Curatorial Workshop, je ponatisnjeno v katalogu razstave.

\* Miško Šuvaković's text entitled PAC - Plug-in - Appropriation - Complicity. On Gorančo Gjorgjievski's Project Curatorial Workshop, is reprinted in the exhibition catalogue.

Muzej in galerije mesta Ljubljane

Gospodarska ulica 15,  
1000 Ljubljana  
Slovenija

T: +386 (0) 1 2412 500  
F: +386 (0) 1 2412 540



| mestna galerija ljubljana |

Mestna galerija Ljubljana 2

Cankarjevo nabrežje 11/1  
1000 Ljubljana  
Slovenija

T: +386 (0) 1 2411 770  
+386 (0) 1 2411 790  
F: +386 (0) 1 2411 782  
E: mestna.galerija-lj@siol.net  
W: www.mestna-galerija.si

Odprto:

torek - sobota  
11.00 - 19.00,

nedelja  
11.00 - 15.00

Ponedeljki in prazniki  
zaprto.

Opening hours:

Tuesday - Saturday  
11 am - 7 pm,

Sunday  
11 am - 3 pm

Closed on Mondays and  
public holidays.

Projekt je podprla / This project was supported by:



Mestna občina  
Ljubljana